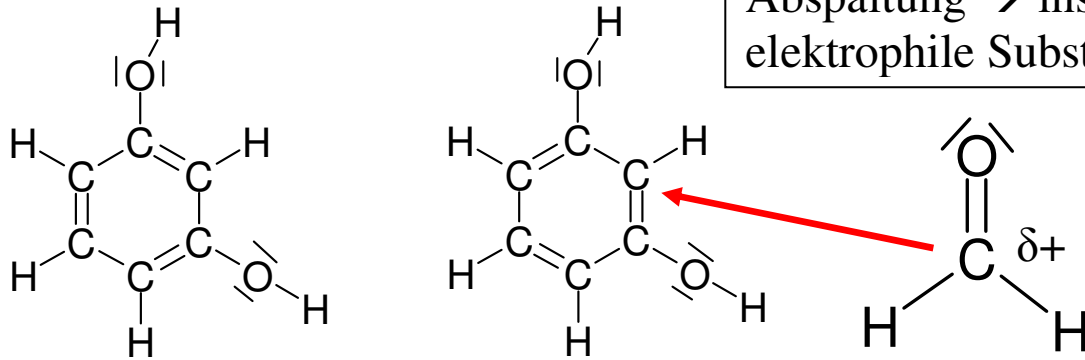
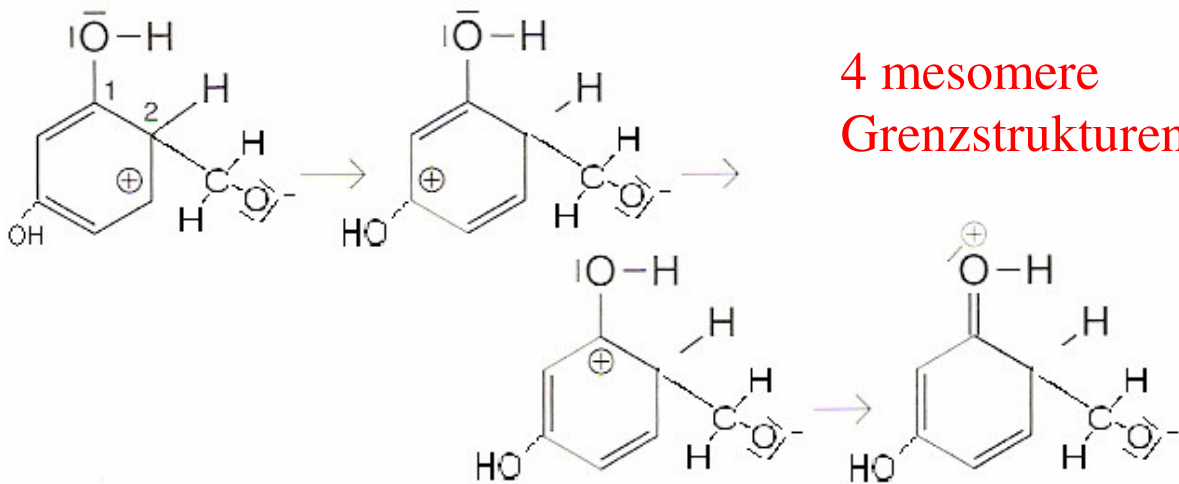


Elektrophiler Angriff des  
 teilgeladenen C  $\rightarrow$  H<sup>+</sup> -  
 Abspaltung  $\rightarrow$  insgesamt  
 elektrophile Substitution

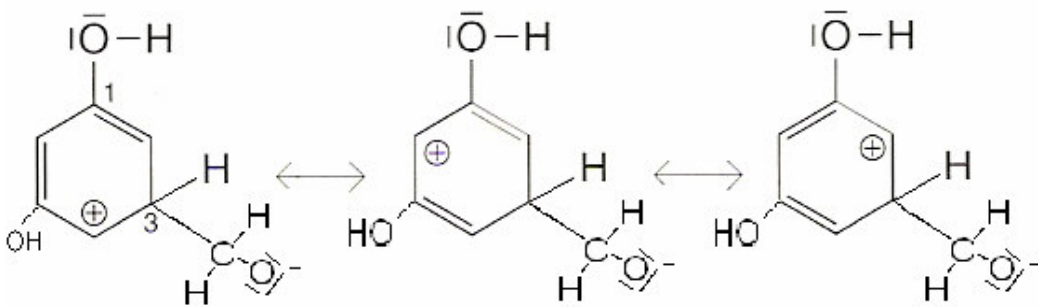


Angriff in *ortho*-Stellung



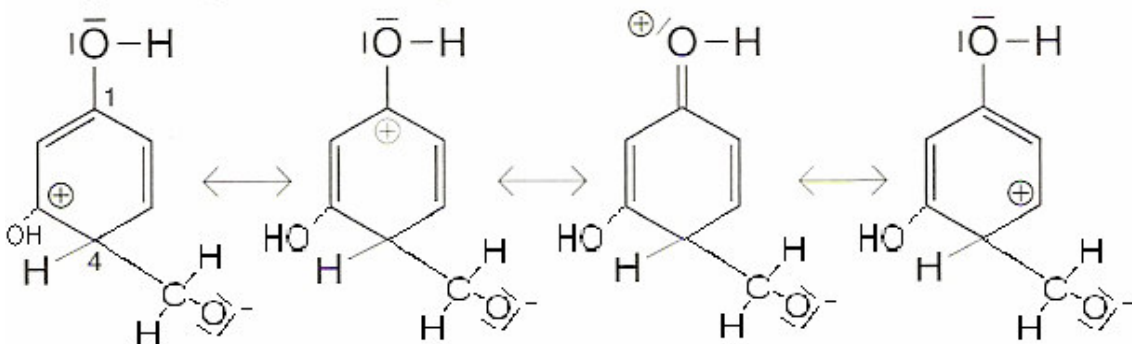
4 mesomere  
 Grenzstrukturen !

Angriff in *meta*-Stellung

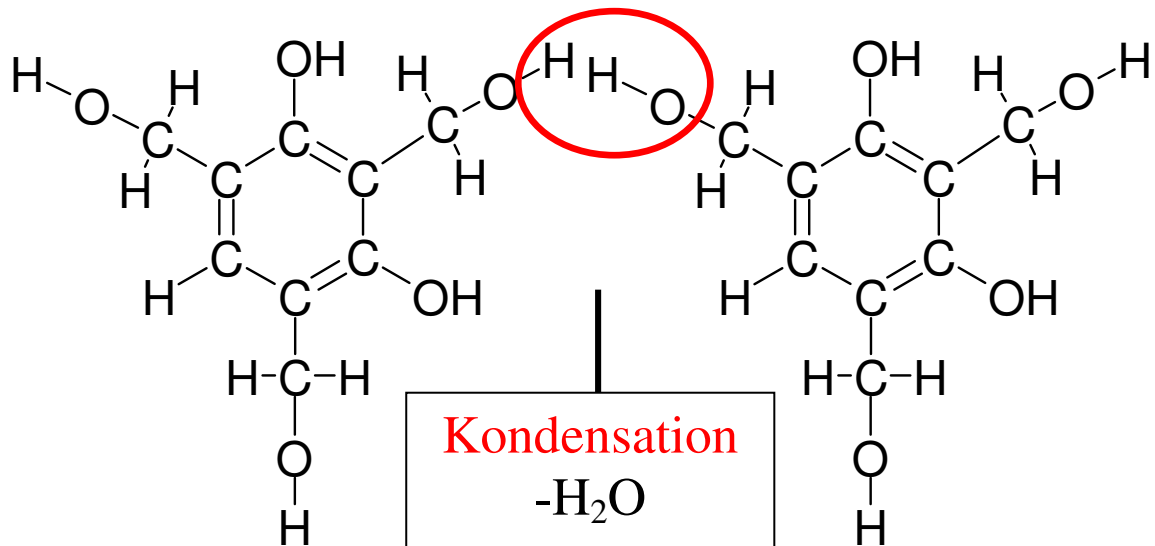


3

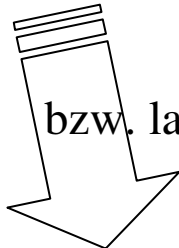
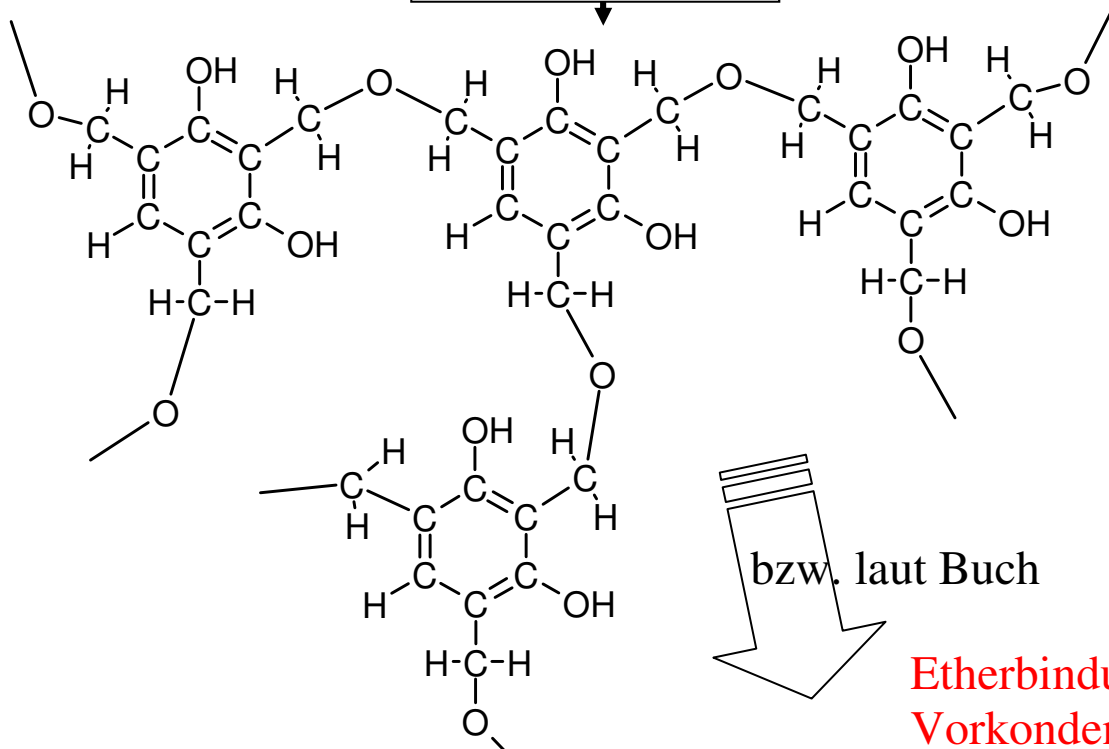
Angriff in *para*-Stellung



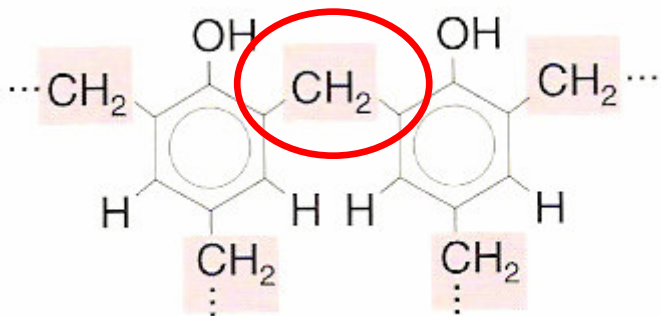
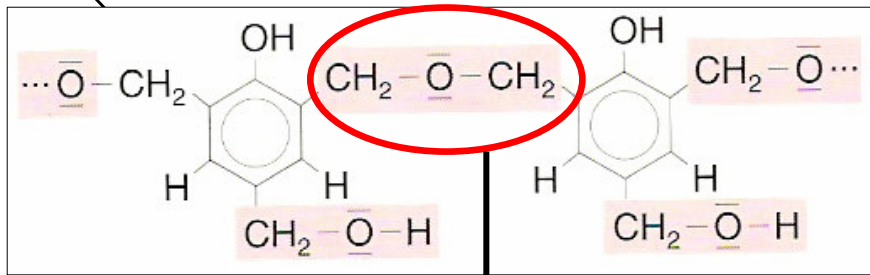
4 !



**Kondensation**  
-H<sub>2</sub>O



**Etherbindung im Vorkondensat**



- CH<sub>2</sub>O  
und bei  
Verknüpfung  
weiterer  
Monomere  
- H<sub>2</sub>O